

KOH-I-NOOR

— Handcrafted in Italy —



PREMIUM SELECTION

Premium Selection

Luxury

Ţaspe

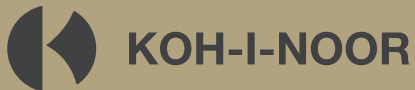
Legno

Metalli

All season

Spazzolini da denti

Toeletta-Borsetta



KOH-I-NOOR Carlo Scavini & C. S.r.l. | Via Meucci, 10 | 21049 Tradate (VA) Italy

Tel. +39 0331 84 22 72 | Fax +39 0331 84 29 21
www.koh-i-noor.it | info@koh-i-noor.it



KOH-I-NOOR

— Handcrafted in Italy —

Come into our world

More than 80 years dedicated to the research of elegant and functional design
for living the world of body care accessories in the best way.



190.185



Carlo Scarini e C. - s.r.l.

Capitale Sociale L. 4.200.000. = - Sede in Milano

Segue inventario al bilancio al 31-12-1955

	riporto	
	11.899.287	
Scatole confezioni	69.937	
Imballaggi	165.842	
Spazzolini da denti 2 ^a scelta Zenith	184.632	
Petini segati 2 ^a scelta	532.920	
bustodie pettini fuori listino 2 ^a scelta	107.827	
Liquidazione spazzolini 2 ^a scelta	430.374	
Pettini 2 ^a scelta	35.404	
Articoli...		24.014

Photo
Bilancio 1955

Through the years

Since 1930

1930 The Scavini family imports and distributes the toothbrushes of Bürstenfabrik Grüneber.

1950 Carlo Scavini founds the Koh-I-Noor Carlo Scavini & C. and takes over the brand, the patents and all the know-how of the Czechoslovakian house.

1960 Koh-I-Noor from 1960 always expands plus its own production and is present in

perfumery and pharmacy market with a wide range of body care products.

1989 Kono, designed by Alberto Marvelli, the famous toilet brush goes into production: a true evergreen, still in the collection today. With this product Koh-I-Noor starts the search e development in the bathroom furnishing sector.

1995 The bathroom furniture division is born as a natural consequence of a genuine “vocation for the bathroom” taken in consideration as a whole as space to live and furnish. Production is concentrated in the Tradate plant to guarantee the best relationship between research and production in the tradition of “made in Italy. “ The products designed by the internal studio with the collaboration of qualified designers, tell the story and the identity of the company and express

the value of continuous research of new materials and innovative solutions technology.

2001 From a great intuition Otti Line debuts, first of a long and innovative collection of wall accessories to apply without drilling.

2005 Born in Barberà del Valles (Barcelona) DKD, Design Koh-I-Noor Distribution, company

subsidiary for the distribution of the brand in Spain.

2011 Koh-I-Noor is present in more than 30 markets in the world. A new logo is created to strengthen its full Italian identity.

2013 The new refined and elegant debut Koh-I-Noor 1930 collection to celebrate a long history of successes.

2014 In the Tradate factory comes inaugurated the new production department of mirrors with light. With this new one offer, with a high technological content, Koh-I-Noor presents itself as a full name actor also in the world of supplies Contract and Hôtellerie.

2020 ...the adventure goes on!

A brand's history

An amazing story of tradition

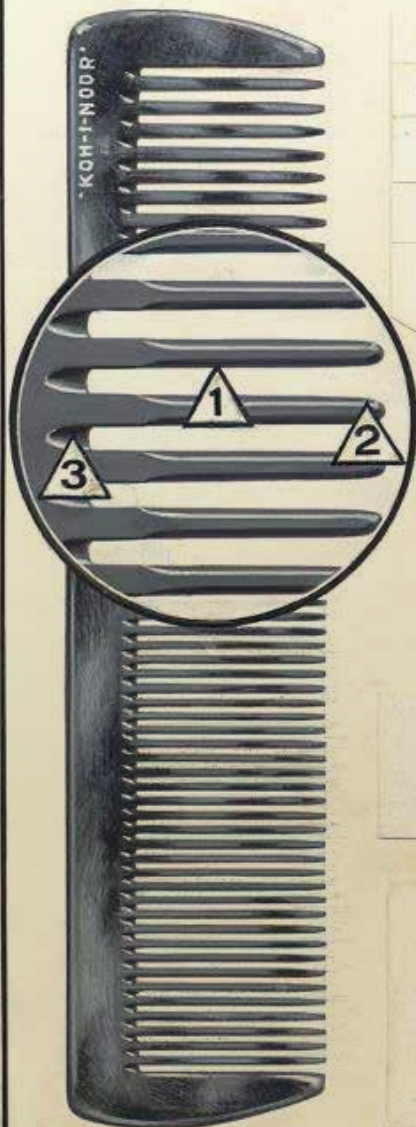
The most important capital a company can possess are the traditions that are passed from one generation to the next. Koh-I-Noor is a company that is all about tradition.

Established in 1830 by Friederich Grüneberg, Burstenfabrik Grüneberg was the precursor of Koh-I-Noor. This company was located in Bratislava, Slovakia and manufactured brushes manually by a workforce of 100 strong. In 1866 leadership of the factory was succeeded by Wilhelm Grüneberg, Frederick's son.

As part of the tradition, Burstenfabrik Grüneberg made some of the first toothbrushes that were distributed throughout Europe. Toothbrush handles were originally made of ox bone and the bristles were inserted by hand into the handles. Under Wilhelm's leadership, the company acquired the first automatic machines used for producing toothbrush. Over time, the handles evolved from ox bone to wood and subsequently to celluloid acetate (plastic).

Il pettine

KOH-I-NOOR



**Penetra facilmente
nella chioma più folta**

Non graffia la cute

Non strappa i capelli

perchè dopo il taglio ogni
dente subisce tre
particolari lavorazioni

- 1 Pianettatura
- 2 Molatura
- 3 Truccatura

Non si rompe

perchè è fatto con materiale
pregiato flessibile e resistente

È sempre perfetto

perchè ogni pettine subisce
un rigoroso controllo e solo
se completamente esente da
difetti viene posto in vendita
col marchio KOH-I-NOR



PHOTO

Gianluca Marvelli
Martino Scavini
Giuseppe Bortoluzzi

A family tale



Creativity, innovation and style made in Italy

Craftmanship and industrialization, technology, design and communication: these are the real protagonists of Koh-i-noor, the company that through a complete range of bathroom accessories and complements narrates since more than 80 years the bathroom as a proper world, a place to be lived with wellbeing, functionality and design typically italian.

At the Tradate factory, quality and attention to detail characterize all stages of the production process of Koh-i-noor, a company with an high innovative vocation, looking every day for new technological solutions, formal and customized for the needs of a specific customer.

Handcrafted in Italy

The true craftsmanship

With the new look of polished plastic, Wilhelm decided to rename the company to something that was synonymous with beauty, uniqueness and perfection. The name “Koh-I-Noor” was selected and is based on the 191 carat diamond found in India. The diamond was taken by the British during the conquest of the Punjab in 1849 and is currently on display in the Jewel House at the Tower of London. The name is actually Persian and means “Mountain of Light”. With the name change and introduction of the new shiny toothbrushes, Koh-I-Noor experienced a significant increase in business. By 1910, the factory in Bratislava employed over 1000 workers.

In the years prior to World War II, Koh-I-Noor granted manufacturing licenses to international distributors including Carlo Scavini, an exclusive Italian importer. Hence, KOH-I-NOOR Italiana was created to which subsequently Wilhelm Gruneberg ceded the entire know-how, patents and brands in the world.

In 1964 KOH-I-NOOR opens the factory in Tradate, where still today all the products of the range of accessories for body care are produced with the productive characteristics of always. The reliability of the materials and the productive tradition make Koh-I-Noor a rare combination between innovation and craftsmanship of true made in Italy.



Quality and design

In order to achieve the high quality combs that Koh-I-Noor produces, each one goes through an average of twenty to twenty-five different processes.

The designs, the refinement of the material, the dedication to producing high quality products and the strong tradition all contribute to the uniqueness of the Jaspé Collection and the other collections from KOH-I-NOOR.





Natural bristles hair brushes

Natural bristle hair brushes are made from boar bristles and offer many benefits such as conditioning the hair, improving the hair texture, reducing frizz, stimulating the scalp and reducing the need to wash your hair so often.



Pneumatic hair brushes

Pneumatic brushes have rubber cushions where the pins or bristles are mounted. The rubber pad has a pocket of air trapped between it and the handle, and compresses when brushing hair, thereby reducing stress on the hair shaft. Pneumatic hair brushes are ideal for use with longer and thicker hair.





Beard

Beard accessories

Handles made of cellulose acetate derived from cotton with turtle coloring effect, warm to the touch and self-polishing. Attention: badger hair used by KOH-I-NOOR is absolutely pure and not artificially whitened. Natural bristles: The bristles used are completely natural and come from animals (pigs) reared under medical surveillance.



Hand made combs

Our handmade combs are produced from cellulose acetate which is derived from cotton. The faux tortoiseshell appearance is a coloring effect that is unique to this material. To obtain the best quality and beautiful finishes, Koh-I-Noor combs go through several mechanical and manual processes.



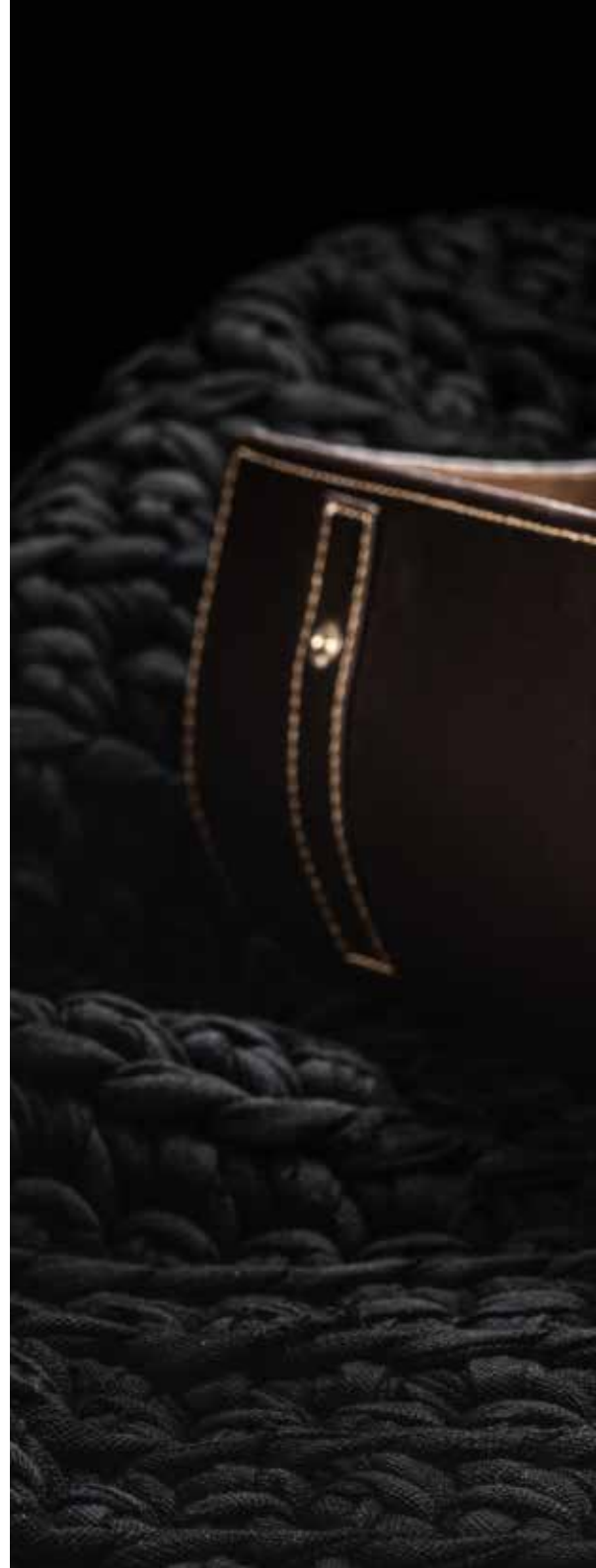


KOH-I-NOOR

Haircare

Toothbrushes

Handles made of cellulose acetate derived from cotton with turtle coloring effect, warm to the touch and self-polishing hand made. Nylon monofilaments or natural bristles. The bristles used are completely natural and come from ani-mals (pigs) reared under medical surveillance. Nylon with top rounded







KOH-I-NOOR

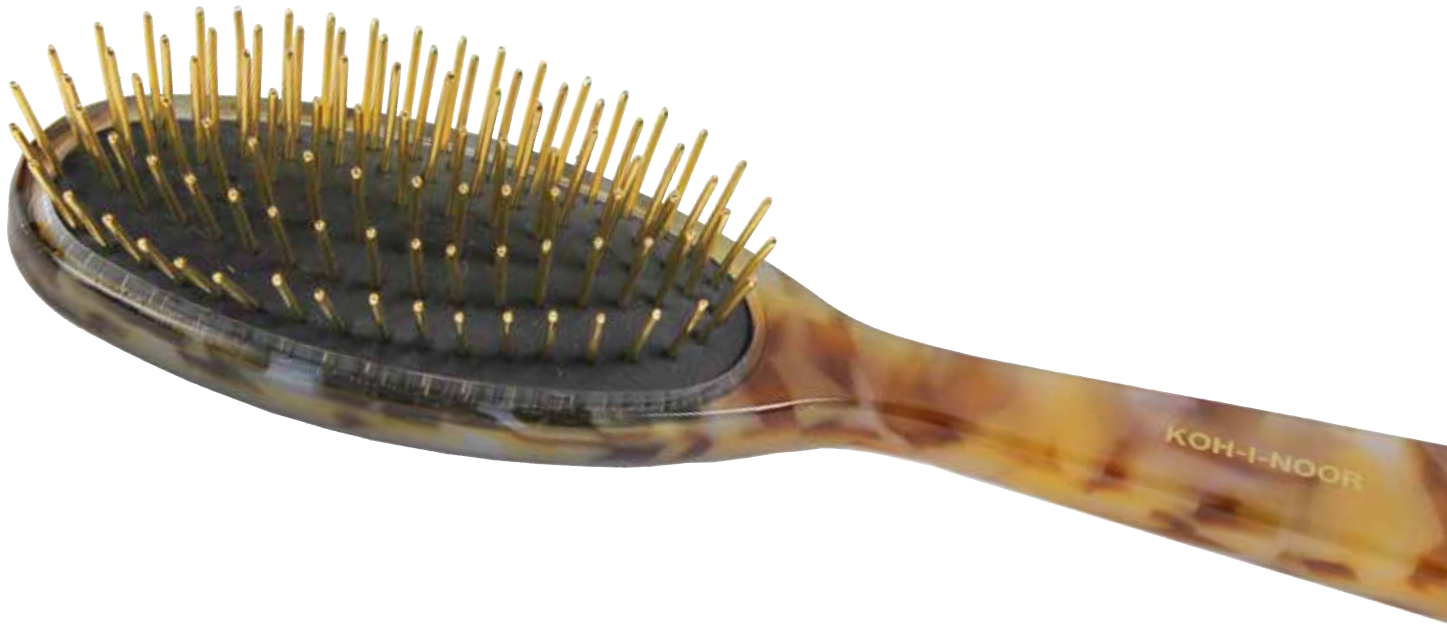
Handcrafted
in Italy

Handcrafted
in Italy

Handcrafted
in Italy

KOH-I-NOOR

Luxury collection



Pure beauty

The essence of cellulose acetate in a very high profile collection.

Brushes and mirrors from the Luxury collection are in fact entirely handmade starting from a 1 cm acetate plate. The shine, transparency and softness of this material stand out in all their beauty in brushes, mirrors and toothbrushes.

Available in 3 coordinated finishes.

The box and pouch also make the perfect packaging for a gift or in-store display. The penumatic brush is proposed with golden metal peaks to guarantee a massage to the scalp and not electrify the hair.

The lenses of the mirrors as always of EU production guarantee a perfect image rendering.

The toothbrushes are offered in 3 different hardnesses to satisfy all tastes.

Pneumatic hair brushes



H - Honey

Pneumatic hair brush with gold plated metal pins.

Oval large (21,3 x 6 cm)

Art. 110H

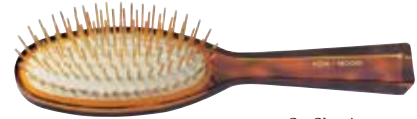


G - Garden

Pneumatic hair brush with gold plated metal pins.

Oval large (21,3 x 6 cm)

Art. 110G



C - Classic

Pneumatic hair brush with gold plated metal pins.

Oval large (21,3 x 6 cm)

Art. 110C





Handcrafted
in Italy

KOH-I-NOOR

KOH-I-NOOR
Handcrafted in Italy

since
1930

since
1930

since
1930

KOH-I-NOOR

Mirrors



Mirror with handle
Confezionato in scatola da regalo e
sacchetto in tessuto
21 x 10,5 cm
Art. 370H



Mirror with handle
Confezionato in scatola da regalo e
sacchetto in tessuto
21 x 10,5 cm
Art. 370G



Mirror with handle
Confezionato in scatola da regalo e
sacchetto in tessuto
21 x 10,5 cm
Art. 370J





Handcrafted
in Italy

KOH-I-NOOR

Toothbrushes

Coccola



C - Classic



G - Garden



H - Honey



Natural bristles

Art. 711 M soft

Art. 712 MD medium



Synthetic with carbon bristles

Art. 713 M soft

Coccola
MINI



Synthetic with carbon bristles

Art. 715 M soft/soft

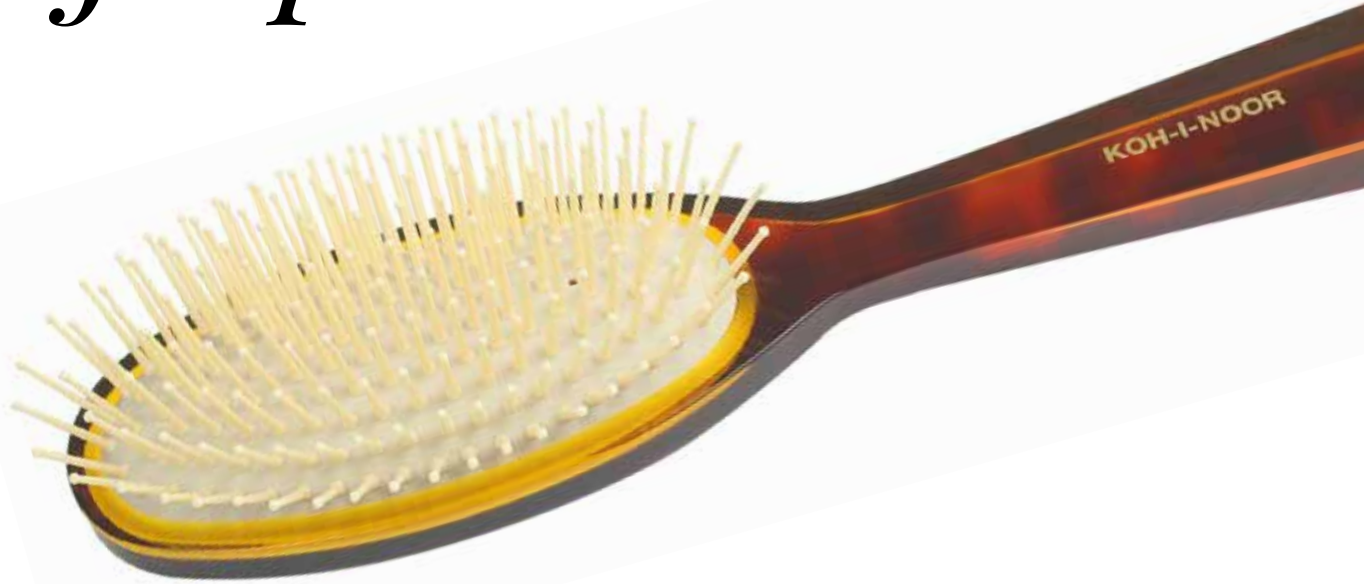


KOH-I-NOOR
KOH-I-NOOR
KOH-I-NOOR



KOH-I-NOOR

Jaspé collection



Elegant, luxury and contemporary

The Jaspé Collection is made from cellulose acetate, a natural plastic derived from cotton linters and wood pulp. The unique characteristics of this material include high transparency which makes products aesthetically appealing, strength which is perfect for brushing thick hair, resistance to scratches, resulting in products that remain in excellent condition for many years. Also, the material has the ability to be offered in an unlimited range of colors, and finally, it is warm to the touch and is self-shining. Koh-I-Noor chose this material for its products and has procured it from the same source since the introduction of the Jaspé Collection.

Koh-I-Noor has carefully studied the melting point of cellulose acetate in forming the handles of the hairbrushes. Due to the precision required to get the faux tortoiseshell effect, no other companies has been able to successfully duplicate this effect with the same level of quality and consistency. Each handle is manually finished and polished. The production of the combs is carried out through numerous mechanical processes and is hand-finished.

Pneumatic hair brushes



Pneumatic hair brush with gold plated metal pins.

Oval medium (16,5 x 4,5 cm)

Art. 107G



Pneumatic hair brush with plastic pins

Oval medium (16,5 x 4,5 cm)

Art. 107



Pneumatic hair brush with gold plated metal pins.

Oval large (21,3 x 6 cm)

Art. 109G



Pneumatic hair brush with plastic pins.

Oval large (21,3 x 6 cm)

Art. 109



Pneumatic hair brush with gold plated metal pins.

Rectangular Large (21,3 x 4 cm)

Art. 108G



Pneumatic hair brush with plastic pins.

Rectangular Large (21,3 x 4 cm)

Art. 108



Pneumatic hair brush with boar bristle tufts and nylon pins.

Oval medium (16,5 x 4,5 cm)

Art. 120



Pneumatic hair brush with boar bristle tufts and nylon pins.

Oval large (21,3 x 6 cm)

Art. 122



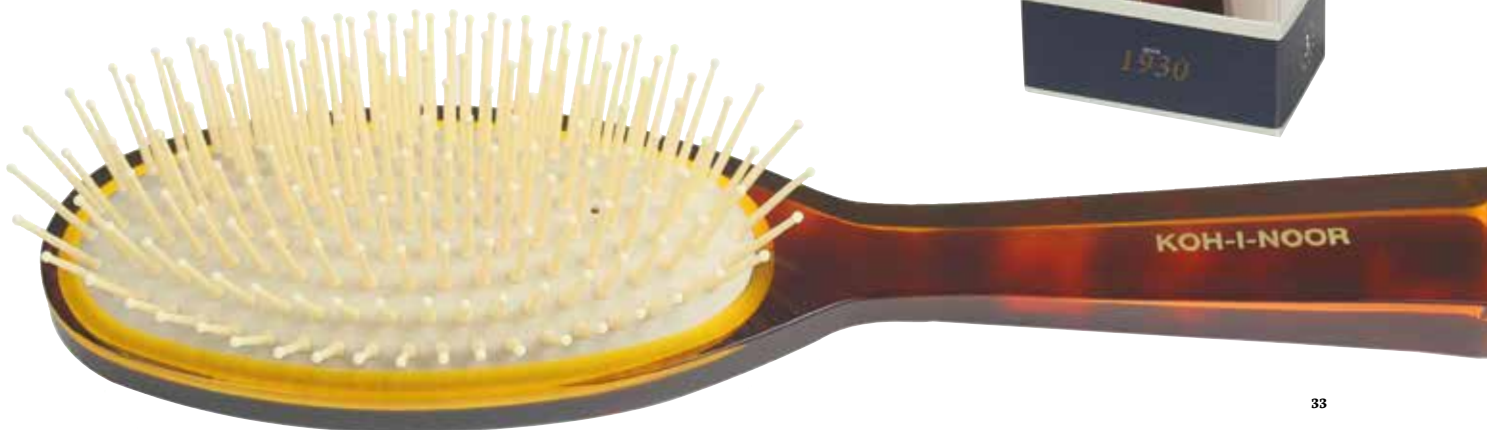
Injected Pneumatic cushions with conical pin.

Oval large (21,3 x 6 cm)

Art. 106

The term pneumatic brush comes from from the rubber cushion where pins or bristles are fixed.

The cushion aims to make it soft and elastic support peaks and collapse when crushed allowing the air to escape from a specially made hole.



Natural bristles hair brushes



Hair brush with natural soft bristles.
Oval large (21,3 x 6 cm)

Art. 126



Hair brush with boar bristles.
Oval medium (16,5 x 4,5 cm)

Art. 290



Hair brush with boar bristles.
Rectangular Large (17,5 x 4,6 cm)

Art. 297



Hair brush with natural soft bristles.
Rectangular Large (17,5 x 4,6 cm)

Art. 297B



Hair brush with boar bristles.
Rectangular Large (21 x 3,6 cm)

Art. 124



Hair brush with natural soft bristles.
Rectangular Large (21 x 3,6 cm)

Art. 124B



Hair brush with boar bristles.
Oval medium (16,5 x 4,5 cm)

Art. 203



Hair brush with natural soft bristles.
Oval medium (16,5 x 4,5 cm)

Art. 203B



Hair brush with boar bristles.
Oval medium (11 x 5 cm)

Art. 295



Hair brush with natural soft bristles.
Oval medium (11 x 5 cm)
Art. 299



Hair brush with boar bristles.
Oval large (12 x 6 cm)
Art. 296



Hair brush with natural soft bristles.
Oval large (12 x 6 cm)
Art. 298



Full round boar bristles.
(ø 4 x 21 cm)
Art. 205



Half round boar bristles.
(ø 6 x 21 cm)
Art. 123

The bristled brushes have the handles made of acetate of cellulose obtained from cotton with tortoiseshell finish, warm to the touch and self-polishing (Rhodoid).

The bristles used are totally natural and come from animals (pigs and wild boars) reared below health check. All bristles are sterilized.



Toothbrushes



Natural bristles

Art. 810 M soft

Art. 811 M medium



Art. 813 DDN extra hard



Art. 814 MM extra soft Badger



Nylon

Art. 815 M soft

Art. 816 MD medium



Art. 816 MC soft Carbon

Beard accessories



Shaving brush Eco Silvertip ø 21
Art. 081J



Shaving brush natural bristles ø 21
Art. 077J



Shaving brush natural budger Stock ø 21
Art. 080J



Shaving brush natural budger I choice ø 21
Art. 078J



Shaving brush natural budger ø 20
Art. 079J



Moustaches and beard travel set
Art. 964J



Natural bristles board brush.
Oval medium (11 x 5 cm)
Art. 295

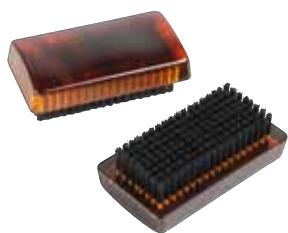


Moustaches and beard poket comb
(9,7 x 1,5 cm)
Art. 312J



Natural bristles beard brush.
Oval medium (16,5 x 4,5 cm)
Art. 203

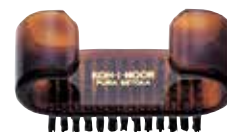
Nail brushes, mirrors and bathroom brush.



Spazzolino da unghie setola di cinghiale
8 x 5 cm
Art. 208



Spazzolino da unghie setola di cinghiale
7,5 x 5 cm
Art. 938



Spazzolino da unghie setola di cinghiale
8 x 2,5 cm
Art. 935J



Pocket mirror with pouch.
Flat mirror + magnifying x3-x6 (ø8,5 cm)
Art. 394J x3
Art. 394J x6



Mirror with handle
21 x 10,5 cm
Art. 370J



Spazzola da bagno in setola
naturale morbida
31 x 6 cm
Art. 294



Combs



Wide and close spread teeth (20 x 4 cm)
Art. 612J



Wide and close spread teeth (18,5 x 3,5 cm)
Art. 610J



Wide teeth (18,5 x 3,5cm)
Art. 528J



Wide and close spread teeth (17,5 x 3 cm)
Art. 403J



Close spread teeth (17,5 x 3 cm)
Art. 407J



Close spread teeth with handle (19 x 3 cm)
Art. 454J



Extra wide spread teeth (11,5 x 5 cm)
Art.408J



Extra wide spread teeth (18 x 4 cm)
Art.409J



Wide spread teeth with handle (20,5 x 5 cm)
Art.457J



Close spread teeth with handle
(18 x 4 cm)
Art. 452J



Pocket comb wide and close spread teeth
(10,5 x 3 cm)
Art. 303J



Pocket comb widespread teeth
(14 x 3 cm)
Art. 323J



Pocket comb close spread teeth
(14 x 3 cm)
Art. 325J



Pocket comb wide and close spread teeth
(14 x 3 cm)
Art. 313J



Moustaches and beard pocket comb
(9,7 x 1,5 cm)
Art. 312J





Legno collection



Ecologically

The Legno Collection is made entirely from renewable plants.

Legno is the Italian word for “Wood”. The “anti-static” wood brushes in this collection are made of red alder wood which is strong but very light weight. The pins are hornbeam wood and natural bristle. The combs are

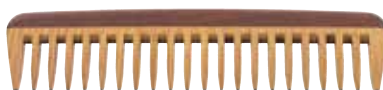
made of beech-kotibè and red alder. This collection is one of Europe’s most popular. Wood naturally collects a very small amount of negative charge, but is for the most part neutral. For this reason, you create less static when you brush with a wooden brush or comb.

Combs



Wide and close spread teeth.
(19 x 4 cm)

Art. 684



Extra wide spread teeth.
(17,5 x 4,2 cm)

Art.685



Extra wide spread teeth with handle
(18 x 5 cm)

Art.686



Afro
(10 x 9 cm)

Art. 687



*The combs are made of
beech and kotibè sandwich.*

Hair brushes



Pneumatic hair brush with wood pins
Oval medium (16,5 x 4,5 cm)
Art. 681



Pneumatic hair brush with wood pins.
Oval large (21,3 x 6 cm)
Art. 683



Pneumatic hair brush with wood pins.
Rettangolare (21,3 x 4 cm)
Art. 682



Pneumatic hair brush with wood pins.
Rectangular Large (24 x 8 cm)
Art. 668



Pneumatic hair brush with boar bristle
tufts and nylon pins.
Oval medium (16,5 x 4,5 cm)
Art. 690



Pneumatic hair brush with boar bristle
tufts and nylon pins.
Oval large (21,3 x 6 cm)
Art. 691



Injected Pneumatic cushions with
conical pin.
Oval large (21,3 x 6 cm)
Art. 692

Legno brushes have handles made of red alder wood and have pneumatic pads on which the bristle are attached. The bristles used are completely natural and come from animals (wild boars) reared under medical supervision. Other bristle types include wood pins, plastic pins or boar bristle tufts and nylonpins.



Metalli collection



The elegance

Effect gold and silver, metals that enrich this line of combs and brushes made in ABS and gold or chrome-plated galvanically with high thickness. The finish is guaranteed not to peel. The collection includes

plastic, metal and boar bristles and each design comes in both large and small brushes.

A line dedicated to the most elegant toilets.

Combs



Extra wide spread teeth with handle
(21,5 x 4 cm)

Art.7130



Pettine rado e fitto
(19 x 4 cm)

Art. 7133



Extra wide spread teeth.
(19 x 4 cm)

Art.7132



Hair brushes



Pneumatic hair brush with plastic pins.
Oval medium (16,5 x 4,5 cm)

Art. 7109



Pneumatic hair brush with plastic pins.
Oval large (21,3 x 6 cm)

Art. 7110



Pneumatic hair brush with metal pins.
Oval medium (16,5 x 4,5 cm)

Art. 7112



Pneumatic hair brush with metal pins.
Oval large (21,3 x 6 cm)

Art. 7113



Pneumatic hair brush with boar bristle
tufts and nylon pins.
Oval medium (16,5 x 4,5 cm)

Art. 7117



Pneumatic hair brush with boar bristle
tufts and nylon pins.
Oval large (21,3 x 6 cm)

Art. 7118



Plastic pins, hairdryer resistant.
Rectangular medium (16 x 2,5 cm)

Art. 7114



Plastic pins, hairdryer resistant.
Rectangular large (20,5 x 4 cm)

Art. 7115



Injected Pneumatic cushions with conical pin.
Oval large (21,3 x 6 cm)

Art. 7106



All Season collection



A classy rainbow

Thanks to the transparency of the high quality polycarbonate, the color reflections of the All season brushes will be unique. The All Seasons Collection by Koh-I-Noor is fun and for the young at heart. This collection comes in coral, petroleum and rose colors and offers either

nylon bristle, metal golden pins and mixed bristle (nylon and boar). There are a few combs to match with a brush as well. Regardless of the color or bristle type, you will want to throw one of these brushes into your purse or gym bag.



Hair brushes & Combs



Pneumatic hair brush with plastic pins.
Oval medium (16,5 x 4,5 cm)

Art. 8109



Pneumatic hair brush with plastic pins.
Oval large (21,3 x 6 cm)

Art. 8110



Pneumatic hair brush with boar bristle tufts and nylon pins.

Oval medium (16,5 x 4,5 cm)

Art. 8103



Pneumatic hair brush with boar bristle tufts and nylon pins. Oval large
(21,3 x 6 cm)

Art.8104



Plastic pins, hairdryer resistant.
Rectangular medium
(16 x 2,5 cm)

Art. 8114



Plastic pins, hairdryer resistant.
Rectangular large
(20,5 x 4 cm)

Art. 8115



Extra wide spread teeth.
(19 x 4 cm)

Art.8132



Pettine rado e fitto
(19 x 4 cm)

Art. 8133



Spazzola picchi oro
(21,3 x 6 cm)

Art. 8110

Pocket mirrors



Specchio borsetta, specchio piano
ingrandimento x3 (ø8,5 cm)

Art. 151 x3

*Pocket mirror, flat mirror and
magnification x3 (ø8.5 cm).*

*Pneumatic brushes with
curly with plastic pins, natural
bristles with monofilament in
nylon or golden metal pins.*

*Handles in Colored
polycarbonate.*





Toothbrushes



Today as then: your everyday ritual

Today as then toothbrushes Koh-i-Noor are products still with the quality and elegance of 80 years ago. Fixing technology of the bristles and its positioning are performed with machines that still respected the productive method of its inventor Wilhelm Gruneberg.

The materials used for the handles are still those of always , cellulose acetate (Rhodoid) using plates or granules for use with injection machines.

Each handle is polished by tumbling (large bodies which rotate on themselves with inside cubes of wood , oil and pumice stone powder) and hand polished with mole wax. The bristles used are natural coming from herds of pigs under health surveillance, Nylon with rounded tips or Carbon infused synthetic bristles. Each toothbrush Koh-i-Noor, after multiple manual interventions, passes the quality controls for final guarantee its undisputed historical and quality.

Coccola



C - Classic



G - Garden



H - Honey



Natural bristles

Art. 711 M soft

Art. 712 MD medium



Synthetic with carbon bristles

Art. 713 M soft

Coccola
MINI



Synthetic with carbon bristles

Art. 715 M soft/soft



The handles of the toothbrushes are made of cellulose acetate made from cotton, warm to the touch and self-polishing (Rhodoid). The bristles used are natural and come from animals raised under health control or in synthetic carbon bristles.



NATURAL BRISTLES

*Quality
Delicacy
Tradition*

SYNTHETIC BRISTLES CARBON

The feather tip penetrates better in interdental spaces, the charcoal bristles they remove bacteria without damaging teeth or gums.

Jaspè



Natural bristles

Art. 810 M soft

Art. 811 M medium



Art. 813 DDN extra hard



Art. 814 MM extra soft Badger




Synthetic bristles

Art. 815 M soft

Art. 816 MD medium



Art. 816 MC soft Carbon



Toothbrushes with handles hand made from sheet in cellulose acetate obtained from cotton, warm to the touch and self-polishing. (Rhodoid)

The bristles used are natural and come from animals raised under sanitary control, in Nylon with rounded tips in bristles synthetic carbon. Bristles already sterilized, clean only with cold water.

Black & White



Natural bristles

Art. 759 M soft

Art. 765 MD medium



Art. 795 DDN extra hard

White bristles



Synthetic with carbon bristles

Art. 786 MM extrasoft Badger

Art. 791 MC soft Carbon





KOH-I-NOOR
- Handcrafted in Italy -

KOH-I-NOOR
- Handcrafted in Italy -

KOH-I-NOOR
- Handcrafted in Italy -

KOH-I-NOOR
- Handcrafted in Italy -

KOH-I-NOOR
- Handcrafted in Italy -

KOH-I-NOOR
- Handcrafted in Italy -



Magnifying mirrors



The perfect reflection

Feel your beauty by mirroring yourself in a perfect mirror. Since the sixties Koh-i-Noor proposes, in combination with the prestigious lines of accessories for body care, magnifying mirrors for travel or vanity. All the mirrors are manufactured entirely in Italy by using exclusively

European high quality magnifying mirrored glasses. The magnifying mirrors are available in different zoom levels and are completely free from distortion of the image.

Dressing table



Duble face mirror with folding handle
and support.
Flat mirror + magnifying x3-x6 (ø18 cm)

398KK x3

398KK x6



Duble face mirror with folding handle
Flat mirror + magnifying x2 x3-x6 (ø14 cm)

387KN x2

387KN x3

387KN x6



One face wall mirror with folding support
with adhesive. Magnifying x3-x6 (ø23 cm.)

389KK x3

389KK x6

Pocket mirrors



Pocket mirror with pouch, flat mirror + magnifying x3-x6 (7,7 x 7,7 cm)

Art. 392KK x3

Art. 392KK x6



Pocket mirror with pouch, flat mirror + magnifying x3-x6 (ø8,5 cm)

Art. 395KK x3

Art. 395KK x6



Pocket mirror with pouch, flat mirror + magnifying x3-x6 (ø8 cm)

Art. 396KK x3

Art. 396KK x6



Pocket mirror with pouch, flat mirror + magnifying x3-x6 (ø8,5 cm)

Art. 394J x3

Art. 394J x6



Pocket mirror, flat mirror + magnifying x3-x6 (ø8 cm)

Art. SC153 x3

Art. SC153 x6



Large travel mirror. Flat mirror + magnifying x3-x6 (ø13,5 cm)

Art. 485KN x3

Art. 485KN x6





*Handcrafted
in Italy*

KOH-I-NOOR



KOH-I-NOOR

— Handcrafted in Italy —

www.koh-i-noor.it